



PLAN OCEAN

Plan Ocean



is a Non-Profit Organization approved by the Korean Ministry of Oceans and Fisheries.

is a Public Interest Corporation designated by the Korean Ministry of Economy and Finance.

aims for marine conservation through expanding sustainable fisheries and marine biodiversity conservation.

Title: Incorporated Association, Plan Ocean
Established: January 30th, 2023

Plan Ocean Presenting Board Members

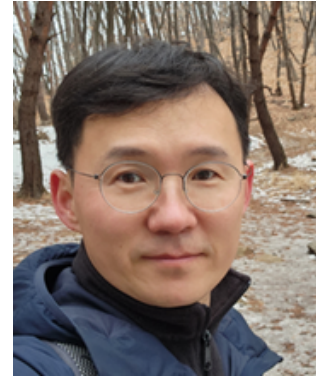


Sooam Kim

Our Board Member

Honorary Professor at Pukyong National University
Managing Director and Researcher at KORDI
King Sejong Station, 5th Research Team's Leader
NOAA-UW Principal Investigator, USA
Chairman at PICES CCCC
Chairman at PICES/ICES SICCME
President at NPAFC
President at IAP, WG
IAP/Smithsonian Institution "Ocean! Guide" WG

Bachelor's and Master's in Marine Science at SNU
Ph.D at University of Washington



Geunhyung Yuk

Our Board Member

Executive Director of the Korean Marine Institute
Non-Permanent Member of NMBIK
Vice President at Korean Wetlands Society
Member of Marine Animal Protection Committee
8th/10th Expert Member of Sustainable Development Committee
Policy Research on Marine Environmental Conservation and Ecosystems
Established the Comprehensive Marine Environmental Plan and General
Plan for Managing Mud Flats
Developed related laws, guidelines, notifications, etc.

Bachelor's in Marine Science at SNU
Master's and Ph.D at Graduate School of Environmental Studies, SNU
Assistant Professor at University of Washington

Plan Ocean **Presenting Board Members**



Yunsig Kim

Our Board Member

Auditor at the Local Finance Association of Korea
Member, Local Autonomy Commission Under the President
Secretary-General at GAORK
Mayor of Siheung City for 4th and 6th Terms
Policy Advisor for MOIS
4th Member of the Gyeonggi Provincial Council

Bachelor's in Chinese Language and Literature, Yonsei University
Master's in Public Administration, Graduate School of Public Administration, Yonsei University



Yeonjung Hong

Our Board Member

Chief of Director at Western Animal Medical Center
Adjunct Professor, College of Veterinary Medicine at Konkuk University
Academic Promotion Committee Chair, KVMA
Editor-in-Chief, Journal of KVMA
Academic Committee Member, KAHA

Graduated College of Veterinary Medicine at KU
Master's in Veterinary Surgery, College of Veterinary Medicine, SNU
~20,000 surgical procedures in areas such as ophthalmology, orthopedic surgery, neurosurgery, and general surgery
Presented over 100 research papers in domestic and international conferences and academic journals

Plan Ocean **Presenting Board Members**



Sungil Lee

Our Board Member

Professor in the Department of Marine Production System Management at Pukyong National University
Editorial Member of Ocean Science Journal
Editorial Member of the Korean Society of Fisheries and Ocean Technology
Marine Production Researcher in the Department of Marine Production NIFS

Member of WCPFC and IATTC
Participated in the Tuna-RFMOs
Participated as a Voluntary Judge for Korean Adjacent TAC and Stock Rebuilding



Jungmee Lee

Our Board Member

Executive Vice President at NTT Korea GTM (Go-to-Market)
Senior Executive Director for Environmental Conservation Program and Network at WWF Korea
Chief Technology Officer at IBM, Korea
Managing Director in the Industrial Consulting Department at IBM, Korea

B.S. in Physics at Yonsei University
Completion of e-SCM for Advanced Management Program at Yonsei University
Completion of Approved Skills and Web Service Program at Washington State University
Completion of Advanced Management Program at Business School, KAIST

Youngran Lee

Founder, CEO

Whale Research Institute, National Institute of Fisheries Science
Lotte World Aquarium
Marine Mammal Center, United States
WWF Korea, Head of Marine Conservation Team
Adjunct Professor, College of Veterinary Medicine, Konkuk University
IUCN SSC Cetacean Specialist Group (2021-2025)

Bachelor's in Veterinary Medicine, Konkuk University
Master's in Marine Biology, Pukyong National University
Ph.D. in Veterinary Medicine, Seoul National University

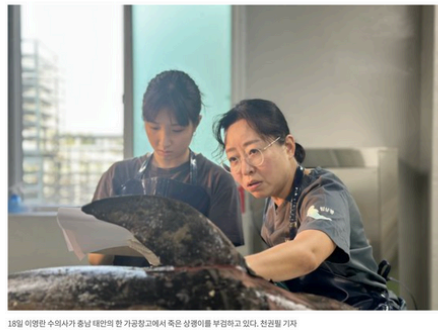
Conducted over 300 necropsies on Marine Mammals
Received the Prime Minister's Award for Contribution to Conservation of Marine Resources
Member of Committees on Marine Environment, Ocean Fisheries, Marine Debris, and Seals

SBS Animal Farm - 'Mass Death of 299 Animals, the Need for Coexistence with NRFPs'
KBS Environmental Special - 'Smile, Narrow-Ridged Finless Porpoise'
SBS Video Mug - 'Veterinarian Dr. Lee Discusses the Death of a Dolphin Swallowed in Plastic ft. Sea Turtle'
SBS Pyeon Sang-Wook's News Briefing - 'First Marine Veterinarian in Korea Reveals the Cause of Whale Deaths'
JoongAng Ilbo - 'Despite the Danger of Costing 30 Million Won for Disposal Alone, Veterinarians Pursue the Cause of NRFP Deaths'
YTN Science - 'Suffering Marine Life...Veterinarian Dr. Lee Young-ran Treats and Preserves'
LG Chemical Green Festival Like Green - 'Humans Should Live When Whales Live,' and numerous other media appearances.



Youngran Lee

Founder, CEO



사회 : 환경
 “15년째 고래 부검, 인간 위한 일”

중앙일보 | 입력 2023.08.23 00:01

지연보기

관련기사



편성특의 뉴스프리즘 사회
 인터뷰] 고래 죽음 밝히는 국내 1호 해양 수의사

방송 2023.10.19 16:33 조회 233



01. Marine Biodiversity Conservation

2030

Aligned with the Convention on Biological Diversity's 30x30 target, contributing to the designated 30% of marine protected areas.

2050

Increase the area of the natural ecosystem and reduce the risk levels of extinction of all species by a factor of 10.

02. Expanding Sustainable Fisheries

Domestic major seafood retailers are removing illegal, unreported, and unregulated (IUU) seafood from their supply chains.

Domestic major seafood retailers officially declare the replacement of purchased seafood with 100% sustainable seafood.

*According to the Convention on Biological Diversity, the goal is to designate and manage 30% of the entire global land and coastal, marine areas as protected areas by 2030.

01.

Marine Biodiversity Conservation

Science-based and Collaborative Network Strategy

- 1) Necropsy and ecological research on endangered species such as cetaceans and seals.
- 2) Establishment of governance and recommendation of conservation measures.
- 3) Promotion, education, and consulting for the public, businesses, and experts.
- 4) Establishment of international and regional cooperation networks.

02.

Expanding Sustainable Fisheries

Market transformation through the Expansion of Sustainable Consumption

- 1) Collaboration through the formation of alliances involving producers, processing companies and retailers, online and offline markets, local government bodies, NGOs, etc.
- 2) Expanding public awareness through promotion and education.
- 3) Policy recommendations to the central government and local authorities.
- 4) Consulting on sustainable aquaculture certification.

01. Marine Biodiversity Conservation

- Establishment and operation of a cooperative working group for cetacean conservation involving scientists, government officials, and NGOs from South Korea, China, and Japan.
- Research on the ecological characteristics using underwater acoustic devices
- Collaborative studies on microplastic analysis, tissue pathology examination, and Persistent Organic Pollutants (POPs).
- Necropsies on the causes of Narrow-Ridged Finless Porpoise deaths.
- Joint research on detailed standards for aquariums under the "Act on the Management of Zoos and Aquariums."
- In collaboration with IUCN Working Group
- Hosting international conferences and publishing reports.



02. Expanding Sustainable Fisheries


- Encouraging market incentives for sustainable seafood purchasing by major domestic seafood retailers.
- Establishing a collaborative system with the government, NGOs, local government bodies, and stakeholders in the fisheries and seafood industry.
- Conducting campaigns to enhance consumer awareness of sustainable seafood consumption, creating content, and operating supporter programs.






 www.planocean.or.kr

 support@planocean.or.kr

 02-6497-6001

 115, Wangsimni-ro, Seongdong-gu, Seoul,
Republic of Korea